



AGL Manufacturing Ltd.

Your Reliable Turbocharger Source and Partner



Excellent Quality
Competitive Price
On-time Delivery



ABOUT AGL

AGL Manufacturing Ltd. has been a reliable source of aftermarket EMD, GE and ALCO turbocharger parts since 1994. Together with trusted distributors, resellers, and service partners – we proudly serve the railway, mining, marine, and power generation industries globally.

Our capabilities include R&D, custom manufacturing, repair, and refurbishment of turbochargers. Head quartered in Vancouver, Canada, AGL has over 100,000 sq ft of warehouse and workshop space. AGL will continue to strive for excellence in quality and service. We thank all our customers for their support and welcome new partners for continued growth and success.





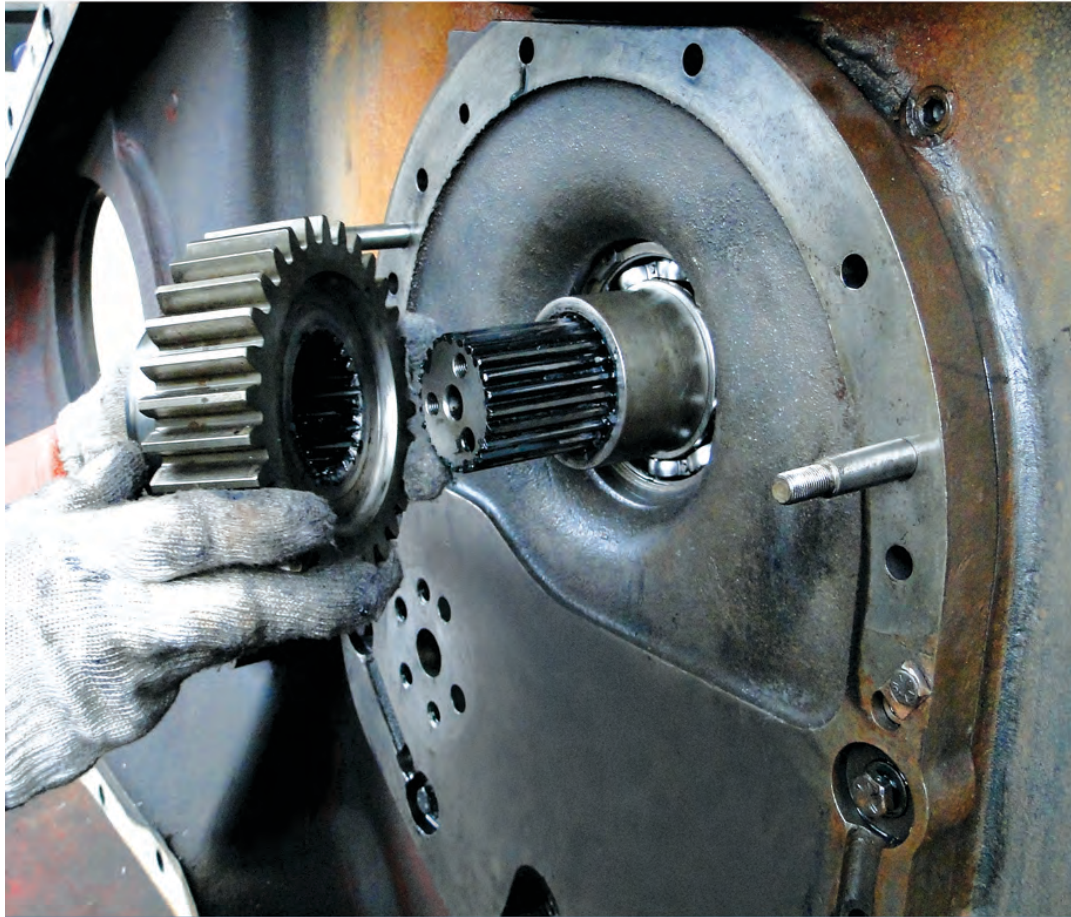
CLUTCH ASSEMBLY



IDLER GEAR SUPPORT



SHAFT SUN GEAR



EMD

AGL Manufacturing Ltd. stocks a full line of turbocharger parts and assemblies for EMD 567, 645 and 710 engine models.

Our aftermarket EMD turbocharger parts are manufactured to OE equivalent specifications and quality standards.



CARRIER SHAFT



TURBINE INLET DUCT SUPPORT



CARRIER BEARING SUPPORT

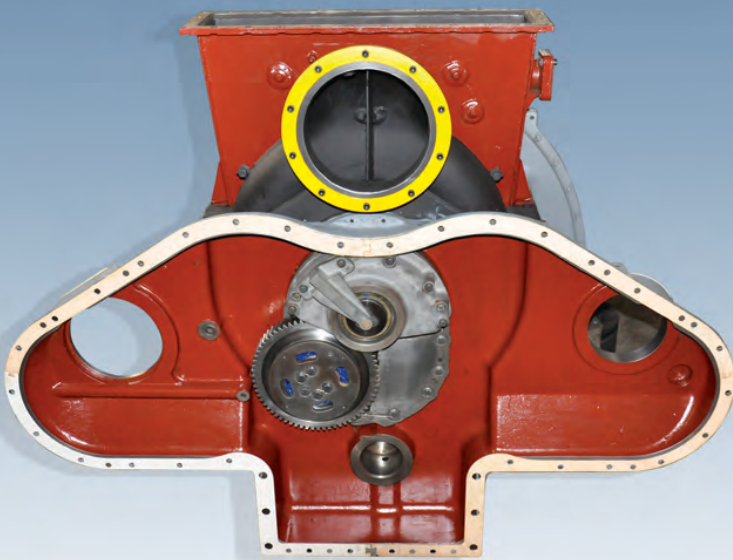
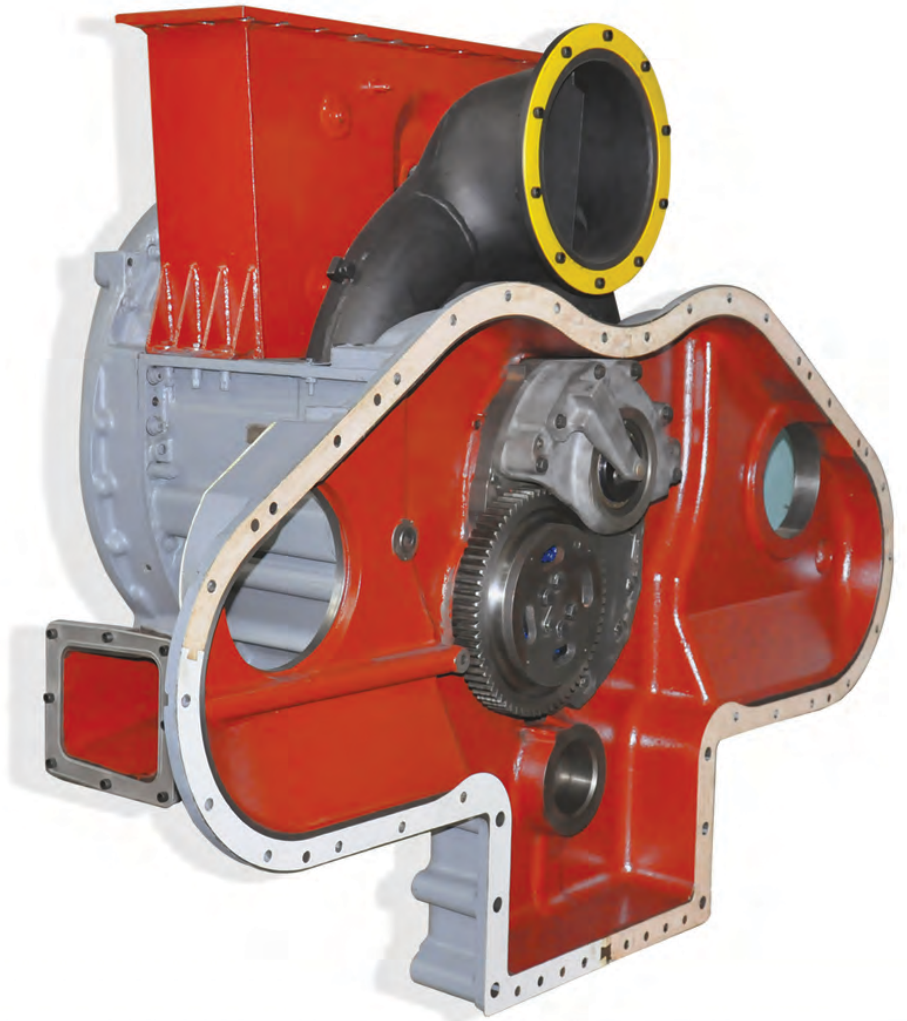
SERVICE HIGHLIGHT

AGL Manufacturing Ltd. can repair and return your turbocharger to peak performance.

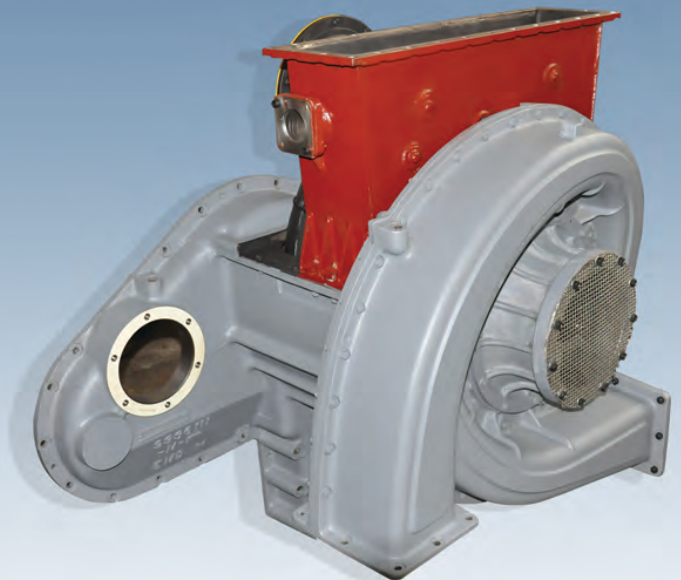
Services rendered include: diagnostics, cleaning, wearing parts change out, rotor balancing, and re-assembly.

Refurbished EMD

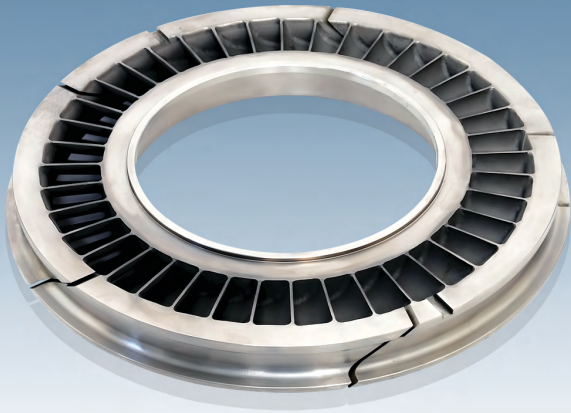
16-645 E3B Turbocharger



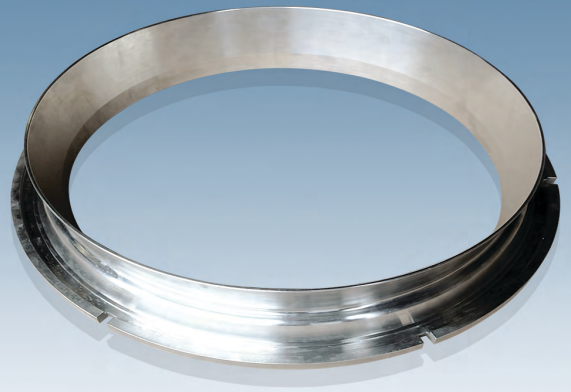
FRONT VIEW



BACK VIEW



NOZZLE RING

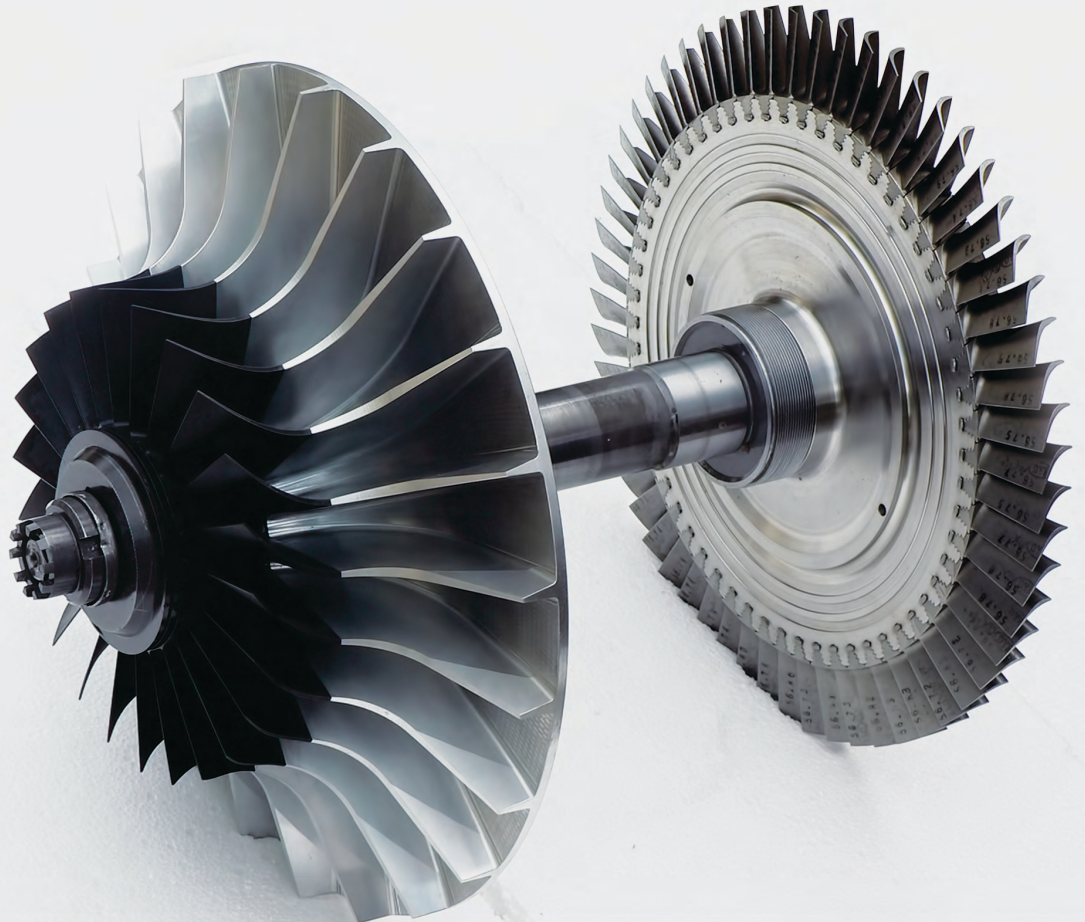


SHROUD RING

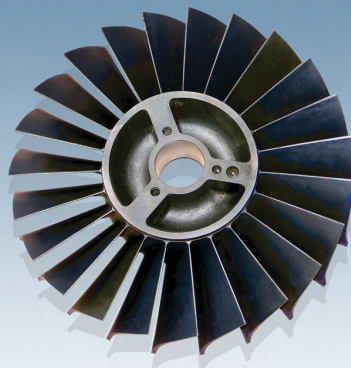
ALCO

AGL Manufacturing Ltd. specializes in supplying hard to find ALCO parts.

We manufacture and stock a complete line of aftermarket turbocharger parts and assemblies for the ALCO 131, 165, 350, 520 and 720.



IMPELLER



INDUCER



SEAL

GE AGL Manufacturing Ltd. will help you stay competitive. We have the highest quality after-market GE turbocharger replacement parts. All our assemblies are made entirely of new, not refurbished parts.



NOZZLE RING



IMPELLER



SHAFT



TURBINE BLADES



TURBINE DISK ASSEMBLY



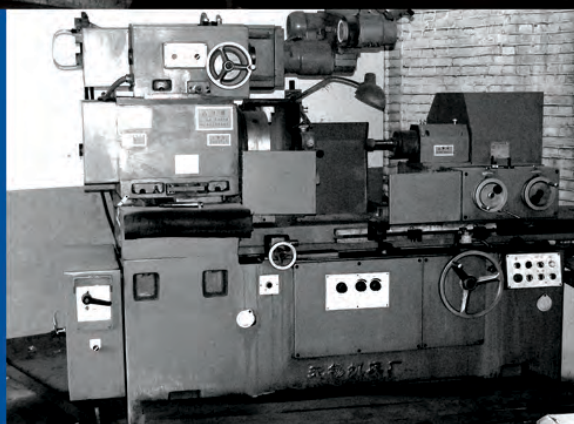
OIL SEAL TURBINE END



ROTOR ASSEMBLY



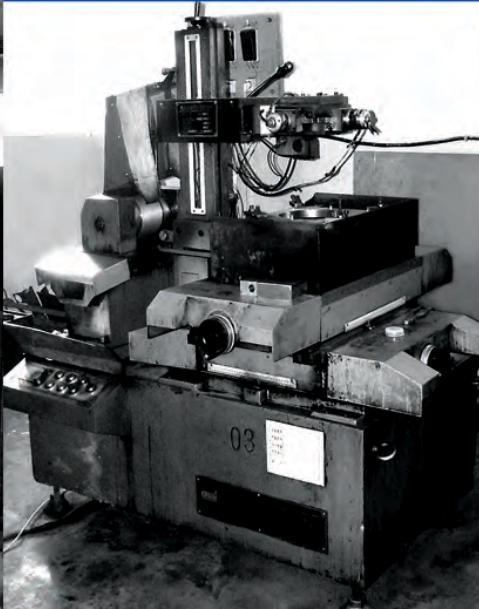
TURBINE INLET CASING



EQUIPMENT

Highlights of our equipment roster:

1. CNC LATHE
2. FADAL 4020A
3. MITSUBISHI RA-90
4. GRINDING MACHINE
5. COMPARATOR
6. HAAS HS-1R 5-AXIS MACHINING CENTER
7. CHARMILLES ROBOFIL 300
8. EDM
9. CMM



AGL Manufacturing Ltd.

8378 Prince Edward Street
Vancouver, BC, Canada V5X 3R9
www.dieselturboparts.com

Direct: 1-604-639-2711
Tel: 1-604-267-1716 ext.113
Fax: 1-604-267-1719
Email: turbocharger@aglmfg.com

